



Grantham Canal News Sheet

This latest issue of the Electronic News Sheet is for **anyone** who would like to be updated on GCS activities and progress. If this is the first issue you have received and you would like future monthly issues, please send an email to: Membership@granthamcanal.com stating your name, confirming your e-mail address and indicating that you wish to receive the News Sheet. Future copies will not be sent without your permission. You do not have to be a member but please consider joining. Details on the "Contact Us" page on our website: www.granthamcanal.com

1. Lock 18

Some excellent news. We now have sufficient funds to purchase a new set of top gates for lock 18. This will mean that we will also be able to use locks 16 & 17 plus the half mile pound once again. It is hoped the work will start next month. In 1994, all the gates on the three locks were new, except for those we are about to replace. These were 2nd hand and came from Thorne. The company that made the 'new ones' was called Callis Mill and although they ceased trading some years ago, they re-emerged as 'Hargreaves' so the drawings and measurements of our gates were preserved. Although this is too big a project for the GCS workparty to attempt we will prepare the site and of course remain involved wherever possible. More information on the website nearer the time

Installing the top gates on 12th March 1994, in the days when British Waterways owned heavy plant. (Right)

(Was that really 17 years ago?) Ed

Archive picture by Colin Bryan



2. Apologies



Apologies to Derek Bolton for crediting his picture (left) to another of our regular contributors in last month's issue.

3. Discovery Day

Despite some rain and strong wind, over 300 people attended the GCS Discovery Day on Sunday October 9th in the former Carpenter's Workshop at Woolthorpe. This event was the most successful we have organised to date and raised £1,000.

The Society's volunteers are working on the refurbishment of the depot, with the aim of creating a permanent resource centre.



The following text is taken from the press release:

"Discovery Day was designed to inform, inspire and involve says the Society's events and marketing organiser Rosemary Gibson. She added: "We have the most amazing group of volunteers, so in addition to putting on a wide range of activities, our objective was also to celebrate their vital role. Our volunteers all work incredibly hard and setting up such a big event took a great deal of work. Team spirit on the day was just a joy to see and experience."

Grantham Canal Society chairman Mike Stone said: "This was our most successful event to date, thanks to all the amazing work done by Rosemary and her volunteers. In all we took £1,000 on the day – our highest total yet for a single event. Whilst we do have a very loyal band of supporters and businesses who donate to us, events are an extremely important part of our overall fundraising effort. All donations are most gratefully received and make a crucial contribution towards funding the essential work we do in the restoration and maintenance the 33 mile stretch of the canal."

The Society organised a range of activities for all the family including boat trips, displays of heritage, a duck race, art, craft and photographic displays, mini-beast identification, hands on science activities, a model boat competition and a range of stalls. The duck race proved to be the most popular activity with over 150 tickets being sold.



Tony with his pet ducks



Entertainers for the day



Display boards inside the building



Lyn Churcher talking to Ian and his daughter

During the course of the event, the Grantham Canal Society accepted a donation of £500 from the Doric Lodge of Freemasonry Grantham, on behalf of the Lincolnshire Masonic Charity Association. The presentation was made by representatives of the Doric Lodge, Mr Fred Lawson and Mr Ron Kettle.

In presenting the donation to Mike Stone, Mr Lawson, Master of the Doric Lodge said: "Applications are made every year from the body of the lodge and we considered this one made by lodge member Mr Marshall Fryer, to be a very worthwhile cause."

As he accepted the donation Mike Stone said: "Thank you so much for this most welcome donation which will be used to assist in the replacement of the top gates at Lock 18. The new gates should last for more than 30 years. This donation will be there for people to enjoy for many years, and will hold back four miles of water all the way to the A1."



L to r : Mike Stone, chairman Grantham Canal Society; representatives of the Doric Lodge, Mr Fred Lawson; Mr Ron Kettle and Mr David Pickup of the Inland Waterways Association.



Just a few of the things to see and do on the Discovery day. It was worth all the hard work to see and talk to so many visitors, with two legs or four. Thanks to everyone, especially Rosemary and Tony .



4. BITM Visit

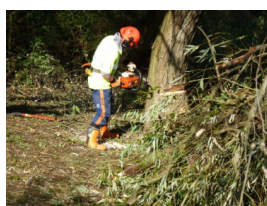
Once again WRG's BITM Group did what they do best and made further progress on the 15th & 16th October with their annual assault on the large trees growing in the canal bed between Mann's Bridge & Hollygate Bridge at Cotgrave. We were blessed with lovely weather and clear blue skies for once. The accommodation at Cropwell Bishop Memorial Hall is perfect for BITM's needs, except this time, as it has been so warm in recent months, the heating was not set to come on. Pam Barlow came to the rescue, leaving her meal in a restaurant to put the heating on. Unfortunately a new timer took some understanding but even then turned itself off in the middle of the night. Another call to Pam and the problem was solved for Saturday night. Yours truly was invited to the excellent evening meal, cooked by June. *(well the other half was away that weekend but did I really drink a whole bottle of wine ... and walk home? Ed)* It is nice to see so many familiar faces and and be welcomed into their team. Our own GCS workparty team consisted of 10 on the Saturday and 3 on the Sunday. The use of two chainsaws and and a polesaw meant that progress was rapid. There is still plenty of cut material to be disposed of between now and next February when BITM have offered to return. Our DVD cameraman came along with his family and filmed a lot of the activity and interviewed some of us too.



Ian filming BITM at work



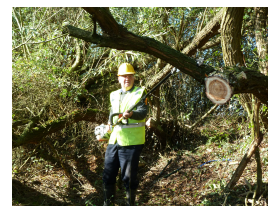
Sally interviewing Tony Hinsley



Yet another Ian, with chainsaw



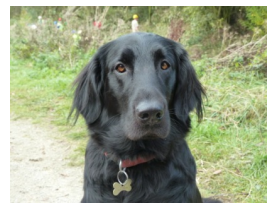
Logs anyone?



Ralph with the polesaw



Bob having a breather



Mina, waiting for a treat

Tony Hinsley, who lead the event has calculated up the total number of volunteer hours as an unbelievable 366.5 for the weekend.

Nice to see Clr. Richard Butler from Notts. County Council and Michael Rowen, Chairman of The Grantham Canal Partnership, who came to see how the work was progressing. Sincere thanks to everyone who worked so hard to recover a little bit more of the canal. Not forgetting, of course, those behind the scenes who spent their time preparing the paperwork and making sure all the equipment was in the right place at the right time. We look forward to seeing you again next February.

5. Workparties

Apart from the BITM weekend all our efforts in September and this month have been to tidy up the outside area of the Carpenter's Workshop. Thanks to John Moulsher who brought in his tractor to cut the grass and arranged for a Teleporter to skew Corvus away from the hedge. The rest of the workparty have been moving cobbles, bricks, sand and all sorts of materials left by BW. The bywash was cleared of weed and all the grass edges tidied up. The hedges have been cut and the whole site transformed as you can see below.



Just a bit of a transformation.
Now we have to keep it looking like
this!
Any offers?

Workparty dates are going to be throughout November but NOT in the first week. I will post information on the website as soon as we have a programme of events. Ed

6. ANNUAL GENERAL MEETING

This years AGM will be held at Cropwell Bishop Methodist Hall on Wednesday 16th November at 19.30 hrs. The hall is on Nottingham Road almost opposite the white building belonging to Cropwell Bishop Creamery.

7. Meet the Committee



David Lyneham-Brown, GCS Commerce Group

Three days spent helping on working boats on the BCN in 1968 started David's interest in the canal system. Holidays on the cut culminated in him building his own 60" narrow boat in 1990, the same year as he began his involvement with the Grantham Canal. He led the group that secured a £400,000 derelict land grant in 1993 which resulted in the restoration of Hickling Basin and nearly three miles of the canal going eastward.

Since the late 90's David has focused on the strategic and political issues impeding the canal's restoration. He started working on the Trent Link and in 2002 published "The Three Shires Project", an economic and social perspective on the restoration programme, designed to widen the relevance of the canal into the wider community. With his colleague Fran Bailey he led the rejuvenation of the Grantham Canal Partnership, resulting in Tony Wilkinson agreeing to take the chairmanship of the group and who drove many of the recent successful initiatives such as the reopening of the Woolsthorpe to A1 section of the canal.

He lobbied to drop the word "Restoration" from the societies name and secured the Awards for All grant in 2010 that resulted in the setting up of the community-based Grantham Canal Rangers.

"The future of the canal will only be secured if the businesses and people throughout the canal corridor are more aware and involved. The people of Nottingham and Grantham must value the fact that their two communities are linked by something much more interesting than the A52"

David has spent virtually all his career in business change management. After university he became an industrial engineer and thereafter lectured in management services, became a project manager, management consultant and an early exponent of business process management. Semi-retired, he still runs management development programmes and strategy workshops – this year so far in Portugal, Hungary and South Africa. In his spare time, besides his narrow boat "Watermarque", he has also built two houses and converted an old pub into a restaurant and flats.

Current projects on the canal on which David is working include the recently awarded HLF project for Woolsthorpe and Stenwith, designing and building a new website for the Grantham Canal with his son who is a web designer and working with the HLF and Belvoir Estates to rescue the lockkeeper's cottage at lock 13. He crews "The Three Shires" with his wife Tracey, and tries not to fall into the canal too often.

8. Something new

On 26th November, students from Loughbrough University's 'Action - the Volunteering Section' will be coming to Knipton Reservoir to help clear out the feeder to the Canal. BW have identified three leaks, repaired two and are in the process of repairing the third. The aim is to once more have a water flowing into the canal at Muston Gorse.



The hope is to have 70+ students on the day and if successful we would like to run similar events next year



Finally, what do these two photographs have in common?

Look carefully at the B&W photo.
You will have to enlarge it.

Details next month.

Photos : Ian Wakefield unless credited otherwise

If you spot anything new or unusual on the Grantham, please contact the editor with photos if possible. Any questions and I will try to find answers.

The editor can be contacted at: ian.wakefield@granthamcanal.com