

AN UPDATE FROM MIKE STONE (Chairman)

The Society now has several opportunities to become actively involved in the maintenance and restoration of 'our' canal. We must therefore ensure that our management structure is appropriate to the need and that responsibilities are shared and no one individual has to shoulder all the work. Top of the list is a need to enhance our welcome of new members; to communicate more effectively to those of you who can support our activities and develop a long-term strategy for the future of the canal embracing the full length from the River Trent to Grantham.

Currently reception of enquiries and of potential volunteers is fragmented. Although it may 'work' it does not present a professional image to new arrivals who may get lost on their passage through our system.

We expect, and indeed are planning for, an increased work-load and a subsequent demand on volunteer resources. If the current CRT application to the HLF is successful our work-load will expand exponentially and this will require volunteer support to be coordinated in teams that both give the volunteers tasks in which they are interested and meet the needs of external colleagues supporting the work. In addition CRT has indicated that the society volunteers could undertake some of the tasks currently supplied by contractors e.g. grass moving, hedge cutting, etc. Undertaking such work would provide the society with an income stream but equally we would have a formal commitment to deliver a quality product to minimum specifications.

To respond to the above requirements the Executive is considering appointing a Volunteers Organiser. This will be a voluntary position whose role will include a focal point for the reception of new active members; the organisation of working parties; identifying specialist training opportunities and coordination with the CRT Project manager. *(See the press advert on page 3 ... Ed)*

To meet the expectations of corporate bodies and others who expect to see a strategy document for the future the Partnership chairman, Michael Rowen, is examining ways of producing a technical document. Incorporating input from the local authorities, environmental bodies, CRT and others including the society this will be the joint plan for the future. The section from the River Trent to Cotgrave was completed a few years ago and published as the Green Infrastructure Study. The need is to extend this along the canal to Grantham. Potential major supporters require to understand the whole vision and not just mini-segments of individual projects. Together we need to provide such a document to stimulate their interest in the value of improvements and the benefits to the wider community.

This is an active time for the society and I hope that you will come along and participate in an exciting future.

Mike Stone.

Some interesting facts about the canal that some of you may not know!

The canal is 33 miles long but only 19 miles end to end as the crow flies

Of the 18 locks: 3 are outside the restoration area

5 are restored leaving 10, 15'9" x 75' locks to restore on the existing canal.

5 new locks would then need constructing to join to the Trent using a new route.

The canal is fed by 2 reservoirs and 6 feeder streams. There are 16 overflows to keep levels constant.

There are 83 bridgesites along the entire length, of which:

13 are not in the restoration area

35 are fully navigable

35 still to be restored of which 21 are Highway Authority owned & 14 are farm bridges

When fully navigable the canal will offer 17 winding holes - far more than the average!

There is 7.76 miles + 4.58 miles of navigable waterway at present ... loads more in a few years time!

Compliments to Fred Marsh ... who has the knowledge!

A Defibrillator gift to THE GRANTHAM CANAL SOCIETY

On a sunny afternoon on 26th June 2014 representatives from the Melton Sailing Club very kindly donated a state-of-the-art Defibrillator to The Grantham Canal Society. This generous gift has been made following the disposal of the sailing club's assets as a result of their closure in 2013. This well established sailing club had been based for many years at Frisby Water Park in Leicestershire. However, the land surrounding the lake, owned by the Cowman family, was to be re-developed necessitating the club's closure.

The Defibrillator will provide a much needed piece of safety equipment for use by the Grantham Canal Society's volunteers who actively participate in the restoration of this beautiful 33 mile long canal. This has all happened at a time when significant additional work will be undertaken by the volunteers over the coming years, ultimately leading to the reinstatement of the 'Grantham' to a fully navigable waterway.



From R/L Mike Sharpe, former Commodore and John Milner, former Secretary, both of the Melton Sailing Club demonstrating the Defibrillator to Ian Wakefield, Operations Manager and Rosemary Gibson, Events Manager, both Executive members of The Grantham Canal Society



Representatives from Melton Sailing Club together with some of The Grantham Canal Society's volunteers

HELP OUR FUNDRAISING BY DONATING.....THINGS!!!!!!!!!!!!!!

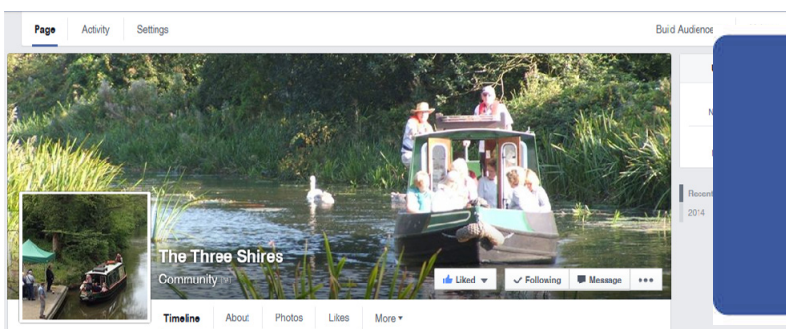
*We have the contacts to raise money for the society from certain donated items
Do you have any of the following which you would like to donate?*

- Stamp collection
- Cigarette Cards
- Model railways - 00 and N gauge
- Beer mats
- Beer pump clips
- Good quality pottery and porcelain
- 12" vinyl LPs, singles and CDs
- DVDs
- Rocks and Minerals

**If so email David on david.lyneham-brown@granthamcanal.org
or ring on 07970 858458**

**WE WILL DISCUSS WHAT WE CAN TAKE AND SELL FOR ADDITIONAL FUNDS
EVERY LITTLE HELPS!!!**

Michael Rowen ... the Partnership Chairman
Excellent birthday cruise on June 11th
enjoyed by visitors and crew.



Don't forget to follow
'The Three Shires' on
Facebook ...
we will update the page
as new information
becomes available so
that you are always
kept well informed.

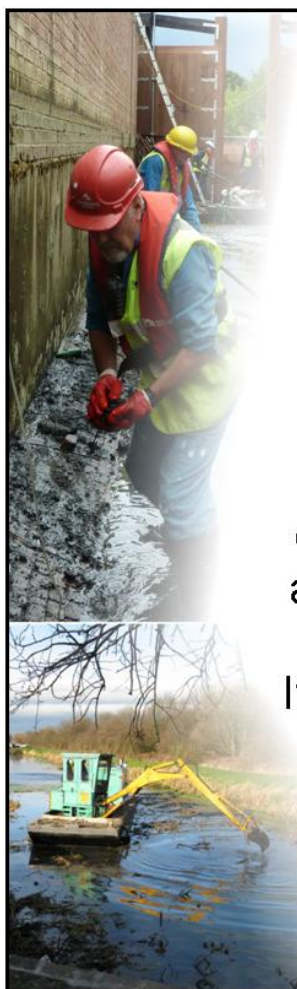
VOLUNTEER CO-ORDINATOR

We are seeking someone to fulfil this important role within the Society to assist with recruitment and organisation of various work groups.

This voluntary position is open to anyone wishing to benefit the community. They need to have good interpersonal and communication skills.

The restoration, maintenance and well being of this 33 mile 217 year old canal depends largely on a dedicated team of volunteers prepared to undertake any task with the reward that their work will be to the benefit of future generations.

If you are interested in applying or wish to learn more then please contact: chairman@granthamcanal.org



 **THE**
Grantham Canal
SOCIETY
 CHARITY No: 507337

BRIDGE Continued



Your comments & photos are always welcome.
 To contact us please email bridge@cygnusweb.co.uk

 **THE**
Grantham Canal
SOCIETY
 CHARITY No: 507337

Community and Education Update June 2014

Events

Hickling Country Fair had to be cancelled because the field was waterlogged and this year **Bingham Town Fair** clashed with **Grantham Carnival**. We did go to Grantham and were able to sign up at least one new family membership that seemed to be keen to get stuck in. We were able to do some useful networking, so I hope the long hours by Tony Pitman and Tony Jackson and myself were worth the effort.

Talks *(given by Rosemary, assisted by Tony Jackson unless otherwise stated)*

The Tuesday Club in Grantham were a friendly bunch, a number of whom walk the canal frequently. Many of the ladies of **Lowdham WI** were familiar with the canal from walks and visits to the Dirty Duck. For **Grantham Civic Society**, a number of whom had heard me speak recently, I revamped the presentation (although it never comes out the same). This was a stimulating session since members of the audience were particularly interested in the feasibility of returning the canal into Grantham. I was asked if I thought it was ever going to happen – my answer: “If you don’t have a dream ...” I showed slides and described the lively canal basins in Loughborough and Market Harborough. I also answered the point often made to us, that the Grantham Canal doesn’t go anywhere but Grantham, with the joys of the journey and comparisons with the Ashby Canal and the Market Harborough Arm of the Grand Union Leicester Line, which ‘don’t go anywhere’ either.

Tony Jackson and I supported **Tony Pitman** when he went to talk to **Grantham Livewires Social Club**. This group had some interesting memories of the canal from their youths. How does Tony remember all those numbers?

It was a delight to speak to Year 5 of **Harlaxton School** – the age group I spent my last years of teaching working with. They are working on Canals and Rivers and we were able to point out that the difference between canals and rivers was not because canals were straight, especially since the Grantham follows the contours. What a delight when one girl asked if one of the slides was of near Barkestone, which it was. Most of these children enjoyed the canal on family walks, bike rides, boat trips or canoes. I look forward to doing some work at Harlaxton Wharf with them soon.

This leads me nicely on to the ...

Learning Team

Thanks to the efforts of **Anne Earl** in approaching Councillor **Tina Combella** and Rushcliffe Borough Council, we have been awarded grants for ‘Pond Dipping’ equipment to use with schools and community groups and I have had the excitement of finding again my Primary Science Co-ordinator cap and sourcing suitable equipment for safely collecting and identifying those little creatures that inhabit the canal.



Some of the pond dipping equipment purchased so far. We shall be using these with Kinoulton and Harlaxton Schools and again on Discovery Day. If you know of a School or Community Group that would like to get involved, please get in touch.

BRIDGE Continued



Your comments & photos are always welcome.
To contact us please email bridge@cygnusweb.co.uk

 **THE**
Grantham Canal
SOCIETY
CHARITY No: 507337

Coming Up:

DATE & TIME	EVENT & VENUE
Sat & Sun 12th & 13th July	Rempstone Steam Fair, Turnpost Farm, Wymeswold
Monday 14th July	Talk: Lambley WI
Tuesday 15th July 6.30	Walk and Talk with Grantham DIY WI at Woolsthorpe
Saturday 19th July 1.00pm approx	The Vale of Belvoir Machinery Group Vintage Tractor Run will pause for lunch at Hickling Basin
Monday 21st July 2.00 pm	Discovery Day Planning and workshop, Woolsthorpe – open to all
Wednesday 6th August	Tony Pitman is talking to Trent Valley Gentlemen's Probus
August Bank Holiday Boat Trips – details to follow	
Sat and Sun 6th & 7th Sept	Harby Country Fair, Canal Farm Harby
Thursday 11th Sept 7.30	Talk: Burton Joyce WI, Village Hall, Burton Joyce
Saturday & Sunday 13th & 14th September	Hickling Scarecrow Festival – once again grateful thanks to the Booth Family for permission to set up the Information Stand in the old canal warehouse in Hickling Basin.
Thursday 25th September	Flintham Ploughing Match
Sun 12th Oct 10.00 – 5.00	Discovery Day at Woolsthorpe by Belvoir Get Involved! Get Informed! Get Inspired!
Saturday 25th October	Hedge-Laying Event, Hough on the Hill (details when available)
<p>Help at events is always appreciated. If you can offer an hour or two to support the Events Team, we would be most grateful.</p> <p>Keep an eye on the website www.granthamcanal.org for updates &/or follow us on Twitter</p>	

Discovery Day Planning Meeting June 26th

Grateful thanks to those people who turned up on Thursday afternoon to discuss plans for Discovery Day, especially the working party who looked as if they had been working really hard. But we had hoped to see a few more faces. **Tony Jackson** has been working hard inviting an interesting range of stall holders and **Terry Davies** has been extracting promises of raffle prizes from various bodies. **Sue Carr and Carole Harris** have offered to co-ordinate refreshments again, which is always brilliant because they usually net half of the profits of the event. **Ralph Bellamy** has agreed to co-ordinate the marshalling of car parking. **Mary Noble** will be dealing with membership paperwork and guide book sales. **Marilyn Cambell** has agreed to work with canal creepy crawlies.

We still need commitments from people willing to man stalls and activities such as selling raffle tickets, running the 'Locks and Bridges Tombola', Lucky Dip, 'Charity Shop' etc. **Ay Up Me Duck** will need help with setting up and running the Duck Race. We need enough people manning the Information Point at the van and taking money for Boat Trips. I would like to get more involved with hands-on activities for all ages, for example a bridge building competition using newspaper, but I can only do that if there is plenty of help in other areas.

We need help setting up before the event, particularly with putting up the structures like the marquee. We also need offers of cakes, raffle and tombola prizes, good quality items for the 'Charity Shop' and other fun or fund-raising ideas are welcome, providing they come with someone to run them.

Next planning meeting Monday 21st July, 2.00 pm, at Carpenter's Shop, NG32 1NY includes how to build a bridge with newspaper.

PLEASE CONTACT Rosemary Gibson, communityandevents@granthamcanal.org AND LET HER KNOW HOW AND WHEN YOU COULD HELP ON THE DAY

BRIDGE Continued



Your comments & photos are always welcome.
To contact us please email bridge@cygnusweb.co.uk

 **THE Grantham Canal SOCIETY**
CHARITY No: 507337