



PUBLISHED BY

The  
**Grantham Canal**  
Society  
CHARITY NO: 507337

DECEMBER  
2017

This month's update from Mike Stone  
(Chairman)



**Greetings one and all! The Festive Season has arrived and now is the time to make merry!**

Look back over the last twelve months and consider how successful the GCS volunteers have been; the work they have done; the money they have raised and the number of visitors who have enjoyed aspects of the Grantham Canal.



None of this could have been achieved without team-work. Volunteers and supporters combined resources delivering significant restoration progress to an otherwise 'lost waterway'. It just shows what can be achieved if we all have the same wish to see the canal restored.

First raise a glass to the many volunteers to acknowledge their efforts and a second to yourself if you are a donor to or a supporter of the GCS. Thank You also!



Work still goes on and the construction phase of Lock 15 is almost complete. The reinstatement of the grounds and fitting of the gates will happen later. We hope to announce the commencement of work on Lock 14 very soon.

WRG 'Bit in the Middle' are joining us for a work-camp this weekend. Their specialist work usually involves arboreal or similar tasks but they can turn their hand to most activities. We thank them for their continued support for the GCS.

The recent AGM was attended by about 10% of the membership. Key documents are available on line or by written application to the Company Secretary.

**I hope you and your families enjoy a relaxed, peaceful and Merry Christmas and a very Happy New Year.**

*Mike Stone*

### To all our members and readers ....

Over the past few years we have built a very effective management team in the society and now have just a few roles to fill. We have recently welcomed the following:

**Gemma Batalla - Health and Safety Manager**

**Chris Cobb - Head Ranger**

**Tony Osbond - Special Projects Manager**

To complete the management team we need to recruit a PR and Marketing person, a Fundraiser and a new treasurer. Stan Harbidge has done a excellent job as our treasurer over the last six years and we thank him for creating a very effective finance and accounting system for the society. He submitted his resignation at the AGM but will remain in post to hand over to a new volunteer.

So, if you or anyone you know, wish to take up any of the three roles of PR and Marketing, Fundraising or a new treasurer please get in touch with me.

**David Lyneham-Brown**  
Chief Executive

[david.lyneham-brown@ntlworld.com](mailto:david.lyneham-brown@ntlworld.com)



**INLAND  
WATERWAYS**  
ASSOCIATION

**Meetings are held at 7.45 pm at  
Rushcliffe Arena, Rugby Road, West  
Bridgford, Nottingham, NG2-7HY,  
about 15 minutes from M1 Junction  
24 up the A453**

**Friday, December 15th 2017**

Christmas Social with buffet including an illustrated talk – "Champagne to Alsace" a continental boat trip by John Wilkinson.

**Friday, January 19th 2018**

"The Bennerley Viaduct – Iron Giant of the Erewash Valley" – an illustrated talk by Kieran Lee of Friends of Bennerley Viaduct.



The  
**Grantham Canal**  
Society  
CHARITY NO: 507337



Supported by  
**The National Lottery**  
through the Heritage Lottery Fund





# The GRANTHAM CANAL HERITAGE INITIATIVE



Stop planks in place

Scaffolding down - all that brickwork - what an achievement!



Some finer details - the lower off-side wing wall and completed quadrant



The cleaned invert

The nearside letterbox - all that waiting now is the grill to cover it.

In January we will include some then & now photos

Many thanks to John Clark for his excellent photos



## Community and Events Diary

If you can help out with any events, please contact Rosemary on [communityandevents@granthamcanal.org](mailto:communityandevents@granthamcanal.org) or 07971173069

Mon 8 <sup>th</sup> Jan 7.30	Rangers Meeting, The Plough, Stathern
Thurs 16 <sup>th</sup> Jan 2.00	Grantham U3A Guildhall,
Thurs 25 <sup>th</sup> Jan 8.00	Leicester Taverners Motor Cycle Club, Ratby Social Clb
Sat 17 <sup>th</sup> Feb 10.00 - 4.00	Grantham Museum 'Do Something New'
Mon 12 <sup>th</sup> Mar 8.00	Belvoir Vale & Social Club, Radcliffe on Trent Br Legion
Wed 14 <sup>th</sup> Mar 7.30	Ruddington Contact Group
Sun & Mon 1 - 2 <sup>nd</sup> Apr	Bank Holiday Boat Trips
Mon 30 <sup>th</sup> Apr 7.30	Corby Glen Horticultural Scy
Wed 2 <sup>nd</sup> May 8.00	Keyworth 8 o'clock Group, Parochial Church Hall,
Sun & Mon 6 - 7 <sup>th</sup> May	Bank Holiday Boat Trips

What a year! I'm busy analysing what we have been up to over the course of the Grantham Canal Heritage Initiative Project to report to the HLF Monitor and Evaluator and it is astounding. More about that when I have finally completed it. It has been wonderful to have the help of such a team this year. If I made a list, I would be in danger of leaving someone out, but Chris Cobb did a grand job of deputising this summer with the help of membership secretary Mary and volunteer coordinator Christina persuading others to help. But neither were Tony and I as idle as we intended and there is still plenty to do finishing this year's events and planning for next year. The diary is filling up. How encouraging to meet members and Bridge readers at events and talks. Hope to meet more in 2018. The diary isn't completely full, so get in touch if you know of an event we can attend or a group or school we can talk to. In the words of the song 'We're very versatile'. Have a wonderful festive season and you might like to add getting involved to your resolutions for 2018.

[communityandevents@granthamcanal.org](mailto:communityandevents@granthamcanal.org) or 07971173069

Rosemary Gibson

waterway  
recovery  
group

WRG have a new logo!



Your comments, news items or photos are always very welcome  
To contact us please send your email to:  
[bridge@granthamcanal.org](mailto:bridge@granthamcanal.org)

The  
**Grantham Canal**  
Society  
CHARITY NO: 507337



## THE WAY IT WAS

*Continuing Mike's account of the rebuilding of Lock 18...*



Now we had stopped most of the water ingress it was time to clear the chamber of silt, building waste and all other items. First we started with buckets on long ropes, Rob Blackburn or Martin Day were usually first down the ladder with their chest waders on. This was too slow and tiring it quickly wrecked the buckets. We then purchased an electric barrow hoist which meant we had to hire a generator until we first borrowed one then purchased our own. This was better but carting the spoil away was quite difficult. Someone suggested a suction pump so a 4inch was hired from Newark but kept getting blocked by the brick and concrete debris. Over the day quite a lot was removed with the lorry unloading in an old clay pit right at the top of the field. We then hired a 6inch pump which came up from Bristol, that was a early start, 6am on site so we could get the max work during the day. This pump cleared most of silt and small debris and some larger items came out with the barrow hoist. I think Dave Smith of British Waterways (BW) lifted the heavy coping stone.

The chamber now clear allowed British Waterway's to carry out a complete survey to determine

what reconstruction would be required. The off bank chamber wall had been rebuilt by the Great Northern Railway and was blue engineering bricks and part round edge coping stones. It also lent into the chamber from joint with the old wall. BW agreed for us to ask Roy Sutton a structural engineer with Inland Waterway's Ass. to inspect the lean and he considered it to be within safety tolerances. So BW agreed to allow us to continue with the rebuild of all the faulty or damaged brickwork.

There was a huge crack in the offside bottom gate end of the chamber that would need serious investigation before new gates could be ordered. In the meantime we had had to erect safety fencing and signs to keep us and the public safe.

All this busy work, mainly at weekends attracted lots of interest from people walking by and we managed to sign up many more volunteers who contributed to the eventual rebuild. One man Garry Connelly turned out to be incredibly useful being a metal smith and welder, he had also done contract work for BW and managed to find many vital parts of the gate and sluice mechanism which were all missing.

While all this was going on we were advised to apply for a Derelict Land Grant, this came from Dave Carnell, IWA Lincs Chairman, for the rebuild of locks 17 and 16. After several attempts we were awarded a grant of £130,000 of which we had to contribute half and complete the work over a 12 month period.

More about this in future episodes.

Now you have all heard the proverbial about, we were waiting

for ages for one coming and then three came together, well that's what happened to us.

Having started lock 18 we had the Grant to rebuild locks 17 and 16.

John Marshall then had written permission from British Rail to remove the embankment.



Mel Crosby and Roger Cook, who had beavered away at Lincs CC and South Kesteven District Council, had agreed to rebuild Casthorpe Road bridge to navigable height, with the proviso that we rebuild Casthorpe Bridle bridge.



Now with none of us as qualified structural engineers, demolition or bridge builders I think we were lucky to succeed with the whole programme within the time limits.

We also had the impending trailboat rally of 1994. More next time.

*Mike Atherley*



## KNIPTON RESERVOIR

Historic England has extended the designation of the Belvoir Estate, straddling the Leicestershire/ Lincolnshire border, to include a previously overlooked gem: Knipton Reservoir, which feeds Grantham Canal, following detailed research by landscape historian and writer Steffie Shields and LDA Design. In a move set to protect the future of the site for generations to come, Historic England has included the Reservoir in the boundary and description of Belvoir Castle on the Register of Parks and Gardens of Special Historic Interest in England. Leicestershire County Council has also recognised the site as one of special interest, adding it to the county's Historic Environment Record of archaeological remains and historic buildings. Situated within one of England's most beautiful parkland settings which has close associations with renowned landscape designers including Capability Brown and Harold Peto, Knipton Reservoir was designed to feed Grantham Canal. This 33mile-long industrial canal, built in 1797 between Nottingham and Grantham to extend the canal network for transporting coal and bulk fertiliser, is thought to be the first in England to rely on floodwater reservoirs.

Research carried out by Steffie Shields and LDA Design's Ian Houlston has revealed the reservoir's historical significance for the first time. It was designed to be a striking feature in a naturalistic setting, with new plantations to enhance its visual and aesthetic appeal and frame

views to local church spires, a boathouse and nearby cottage. The serpentine reservoir dam is crossed by the Croxton Avenue riding, which has also been included within the registered boundary, and still offers up some of the finest views on the Belvoir estate.

"Knipton Reservoir is a significant part of England's industrial heritage," explains Capability Brown expert, Steffie Shields, who has authored a detailed report on the site. "Unusually, it was designed to provide flood protection and grow the local economy, at the same time providing a place of recreation and beauty in the Brownian picturesque manner so successfully that it attracted Royal visitors."

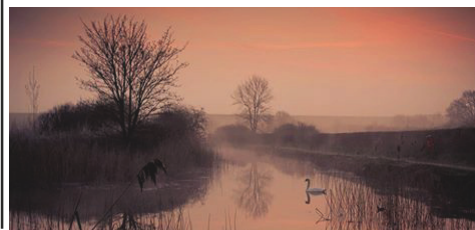
LDA Design's Ian Houston adds: "The reservoir is an early example of how engineering performance and aesthetics can be aligned to integrate innovative large-scale infrastructure into its wider landscape setting to enhance rather than diminish. We can learn so much from the thinking and engineering expertise behind Knipton in approaching tomorrow's infrastructure, such as HS2."

See also

<https://historicengland.org.uk/listing/the-list/list-entry/1000957>



**Follow us on  
Facebook**



## Flora & Fauna along the Grantham Canal by James Faulconbridge

December - Badgers

Badgers are one of our most charismatic native species and can be found along the Grantham Canal when night falls. The banks associated with the canal corridor provide ideal locations for setts; whilst the hedgerows and grasslands provide foraging habitat including seeds and berries, as well as invertebrates such as earthworms, beetles and grubs. December is when badgers become pregnant – they can mate throughout the year, but they delay the development of their young until December when the fertilised egg will implant. The cubs are usually born between January and March and will emerge from their setts in spring. The implication of badgers in the spread of TB to cattle has led to recent culls and there is the threat that they may yet be rolled out more widely. Nottinghamshire Wildlife Trust (NWT) are taking part in a vaccination scheme – called the Badger Edge Vaccination Trial (BEVS) – as TB is not yet prevalent in the county. The aim is to develop a TB-free badger population to prevent the further spread of the disease. NWT are working with local landowners who support this preventative action, but they rely on volunteers to help with the feeding, trapping and vaccination of the badgers. Setts in farmland around the canal in the Vale of Belvoir were vaccinated this year and further sites are scheduled for next year. If you would like to support the NWT in their endeavour, you can find out much more on their webpage – point towards

[www.nottinghamshirewildlifetrust.org](http://www.nottinghamshirewildlifetrust.org) and search for BEVS.



Your comments, news items or photos are always very welcome

To contact us please send your email to:

[bridge@granthamcanal.org](mailto:bridge@granthamcanal.org)





# Sunday 19<sup>th</sup> November - the 'Friends of Lady Bay' triumph!

The Lady Bay canal clean-up took place on Sunday 19<sup>th</sup> November on a bright & sunny day. The photo below shows the lady who wrote to the CRT in the first place. Her name is Christine and can be seen standing on the towpath wearing the orange coat.



Approximately 60 enthusiastic helpers turned up, most were young families from the immediate location, many (but by no means all) having properties which back onto the canal. There were a few really old people like me mucking in who managed a fair turn of the work. The main area of work on the canal was from the pedestrian traffic light crossing at the end of Cyril Road to the vicinity of Kendal Court.

One of the main aims of the project was to form a path through an area of densely packed reeds which had completely blocked the canal. I think even the coots and moorhens took to the towpath to get around them. With the help of the boys from the Holme Pierrepont Canoe Club and the CRT dinghy, a path through was



successfully created. I did spot Verity Butler working in the dinghy for a while, she being instrumental in organising the clean up operation with Wayne Ball of CRT.

Many people were gainfully employed removing the reeds from the water's edge along the towpath canal bank. One CRT gentleman with waders was busy cutting down reeds and also overhanging trees on both sides of the canal.



There were moments when a video film would have captured rakes, cutters and brushes being wielded dutifully giving the impression a medieval battle was taking place.



Another activity produced a quite startling change, namely, cutting back the grass which had encroached beyond the timber edges at each side of the towpath. The towpath width was doubled. This work really was back-breaking but was carried out with gusto by ladies and gents. It would be really good if this new-found additional space could be maintained but I suppose there's no way to stop the grass growing back.

Several CRT wheelbarrows were fully utilised to cart the waste material to a dump where it was transferred to a CRT lorry. Despite there being 4 or 5 wheelbarrows (I think) they were in such demand that one family brought their own. There was a worrying moment when we were asked not to cut anymore reeds as the skip which the lorry was continuously making journeys to was getting full. But common sense soon prevailed - so we kept cutting! Unfortunately this meant that a huge

pile of waste material built up by close of play. This took CRT personnel quite a few journeys to remove it later that week.



The day's activity was referred to as Phase 1. Another day is to be arranged early in the new year. Liaison between all parties is being maintained by Verity Butler. Her continuing efforts and the enthusiasm of the Lady Bay residents will ensure Phase 2 takes place soon. I feel we should congratulate the many Lady Bay families (and other volunteers) who turned out in such numbers and worked so hard, the organisers (Christine, Valerie, Verity Butler and others) and also the people who provided much needed refreshments along the way.



We are also grateful to the CRT personnel who worked hard to make the whole thing possible, especially the lorry driver who had to handle all of the waste at both the canal end and the skip end.

I was also surprised by the canoe boys. Cutting reeds from the canal is hardly usual canoe practice but they turned up and did much of the work in clearing the central patch of reeds. We should be very grateful to them for their valuable input. By the way, if they are agreeable, we could make good use of them for many other tasks which need a relatively easily launched vessel.

Whilst all of this was taking place, Chris Cobb had a display set up nearby where he had a very successful day making contact with the many passers by.

*Rob Cook, GCS Section 1 Range*

**Many thanks to Rob & Tony Pitman for these details and photos**



## Local Corporate Volunteers Start Work on the Grantham Canal

Always seeking new volunteers to work on the canal the GCS are developing a working relationship with the staff of Experian PLC, the global information services group with a considerable presence in Nottingham and 40 other countries.



Experian have put forward their community staff volunteers to work on the Grantham Canal and their first group joined us on August 14<sup>th</sup>. We met the group at the Woolsthorpe Depot and over a cup of tea briefed them on the society, our aims and objectives and progress to date.



We then identified the task they would be undertaking, clearing the feeder connecting the Denton Reservoir to the canal, of litter, tree branches and other blockages. We took them to site and after a morning's work they retired to the Dirty Duck for a well-earned lunch break. Before returning to site we showed them the work being done on Lock 15.

The group worked hard and effectively, the feeder stream being cleared of all superfluous material by the late afternoon.



Aron Burghart, Experian team leader reported – *"Everyone enjoyed the day. It was great to get out of the office. We all found your informative chat, prior to the morning session, very interesting. Thanks for the tea and biscuits."*

We are now set on building the relationship with Experian – less than 24 hours after the first team returned to the company they asked if we could place another 82!!

The second group joined us in October and started clearing the undergrowth on the offside bank between Woolsthorpe depot and Lock 15. Clearance is necessary so we can complete the profiling of the canal (determining the depth of silt relative to the canal bed). The third group are due to join us on December 13<sup>th</sup> to complete this section.

Other companies will be joining us in 2018 – to help with the restoration and maintenance work and hopefully to go back to colleagues, friends and family and spread the word of GCS achievements.

D L-B

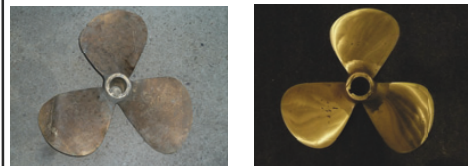
## A VERY PROPELLING STORY!

Below are the before and after pictures of the original *Three Shires* prop which was damaged by hitting something very hard.

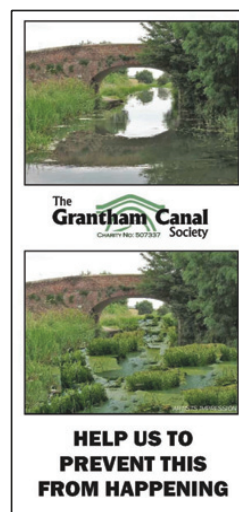
The superb repair was done by the family firm of Crowther Marine, Amanda & Keith pictured.

**All we have to do now is fit it!**

Ian W



**Don't forget to support our Dredging Campaign - please ask for a leaflet**



**What about one of these?**



Your comments, news items or photos are always very welcome

To contact us please send your email to:

[bridge@granthamcanal.org](mailto:bridge@granthamcanal.org)





## Spreading the Word

One of the most important tasks facing the Grantham Canal Society is that of raising awareness across the East Midlands of the existence of the canal, and the value of the work done on it. From both the Awareness and Fundraising perspective our canal has three notable disadvantages.

**Firstly**, in the Act of Parliament for authority to build it was referred to as the Grantham Navigation and omitted Nottingham from the title (as in Leeds - Liverpool). Its title in common use therefore registered with the residents of Grantham but for any Nottingham resident north of the River Trent there was, and still is, very low awareness of the canals existence.

**Secondly**, we are disadvantaged by the fact that the Grantham runs through the rural Vale of Belvoir and is acknowledged as one of England's most beautiful canals. So that is a disadvantage you query?



From a fundraising perspective unfortunately it is. In the 1980/90's many of Britain's urban canal restorations benefited significantly from derelict land grants and their like. For us the Cotgrave Colliery RECHAR funding from the EU is the best we have done in that category and there is little chance of more industrial dereliction funding in the future, with the possible exception of the Grantham Basin.

Thirdly, when the Nationalised railways shut down the Midland Railway line to Melton Mowbray and the Lady Bay railway bridge became a road bridge, the Grantham Canal lost its connection into the River Trent and the rest of the 2000 mile canal network. Development of a new connection is a strategic priority and pushing that up the agenda is integral to the new Grantham Canal Strategic Plan currently being developed by Canal and River Trust, Grantham Canal Society and Local Authorities in the area. Intimidated? Don't be.



When we complete the Woolsthorpe Locks nearly £10 million worth of restoration will be in place. A rough estimate of £50 million for the entire project shows us one fifth of the way down the track and now we are working with a forward-looking Canal and River Trust the full restoration has never looked so probable.

We and our successors will deliver this restoration - but greater awareness, more active support and belief in our vision are all vital.

**So, spread the word - with pride in what we have already achieved.**

*D L-B*



## Social Media Medley

Since the last edition of Bridge, Facebook and Twitter followers have learned about the



proposed canal link between the Grantham Canal and the Sleaford Navigation. We've discussed the child's finger marks in the original bricks used to build Lock 15 – I wonder if we'll discover any on Lock 14? Hope so.

We relay news of Lock 15 restoration progress as soon as we get to hear of it – and other items of news about the canal too.

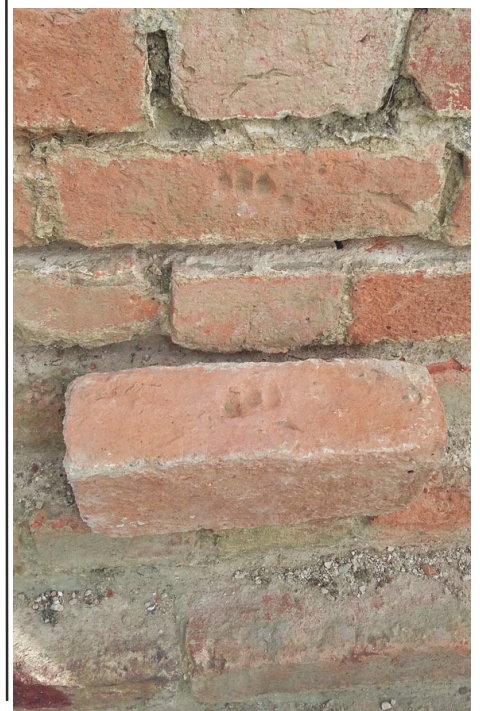
We do need regular updates from our Friday and Saturday Workparties...if they're reading!

By the time you read this, we'll probably have discussed masons marks – both old and new!

Updates and news items; please send to:

[anthonykjackson@btopenworld.com](mailto:anthonykjackson@btopenworld.com)

*Tony Jackson*



Your comments, news items or photos are always very welcome

To contact us please send your email to:

[bridge@granthamcanal.org](mailto:bridge@granthamcanal.org)



This is the 1<sup>st</sup> page of a 3 page rhyme written by Fred Marsh about the Deepcut Dig.  
It was published in Bridge in the December 1977 Edition *Ed*

DEEPCUT DIG 1977 REPORT IN RHYME BY  
FRED MARSH

THE WATERWAY RECOVERY GROUP  
A HAPPY WILLING VOLUNTARY TROOP  
OF GUYS AND GALS FROM FAR AND WIDE  
WHO HELP RESTORE OUR COUNTRYSIDE

THEY SPEND WEEKENDS AT DIFFERENT  
PLACES  
ALWAYS FULL OF SMILING FACES  
THEY WORK AND GRAFT FOR DAYS AND DAYS  
BRING BACK TO LIFE OUR WATERWAYS

SOME THIRTYFIVE OR FORTY SHOW  
BUT ON BIG DIGS FIVE HUNDRED GO  
I LIKE TO GO ON THEM- THERE DIGS  
WHERE WE ALL SLEEP EN MASS LIKE PIGS

THERE CAME CHANCE IN SEVENTY SEVEN  
SO OFF, WE GOES THE GRANTHAM ELEVEN  
Two JOHNS, TWO MARTINS, KEN AND CHRIS,  
FRED, ROBIN, ROY AND CLIVE AND IZZ

WITH SLEEPING BAGS, WASH KIT AND TOWEL  
WE TOOK OUR LILO 'S MUG AND TROWEL  
SOME WENT IN CARS AND SOME BY BUS  
WE TOOK THREE KEGS OF ALE WITH US

WE STOPPED JUST TWICE UPON THE WAY  
WHEN NATURE CALLS YOU HAVE TO PAY  
SOME SANG A SONG /ND IT WAS FINE  
CALLED "KEEP YOUR HANDS OFF SHE'S MINE"

AND THEN A SONG THEY COULDN'T RUSH  
ABOUT THE LEGGERS "PUSH BOYS PUSH"  
THEY SANG AND SANG TILL THEY WERE  
HORSE  
THEN WET THEIR THROATS WITH ALE OF  
COURSE.

AT LONG LAST WE ARRIVED IN CAMP  
WE CHOSE A ROOM WERE WARNED "ITS  
DAMP"  
IT !LOOKED QUITE DRY TO US ,AND SO -  
WE THOUGHT "THEY'RE TRYING TO MAKE US  
GO"

THEN MORNING CAME WE H/AD TO WASH  
IN UNISEX ABLUTIONS "GOSH"  
THEN BREAKFAST TICKET HELD IN HAND  
IN BIG LONG QUEUES WE HAD TO STAND

FOR RICE CRISPIES AND MILK AND SUGAR  
THEN QUEUED AGAIN OH BUGGER BUGGER  
FOR EGGS AND BACON AND FRIED SLICE  
BEANS AND TOMATOES TWAS QUITE NICE

WE CLIMBED IN TRANSPORT THAT WE KNEW  
WOULD GET US TO THE DIG H.Q.  
WE WERE DIVIDED INTO GROUPS  
AND GIVEN BARROWS, SPADES AND SCOOPS

TO CLEAR THE SLURRY, SLUSH AND GUNGE  
AND IF WE LIKED COULD USE A SPONGE  
SOMEONE DID ASK BECAUSE THEY FELT  
THE LOCK NAME IT HAD BEEN MIS-SPELT

Our grateful thanks to the following  
who have recently made a donation to  
the Society:

Tony Jackson, Anthony Binch,  
Jocelyn Browne, Antonia Browne,  
Clara Stuart, Nigel Lee, R.Gibson,  
D.Thornhill and C.Holmes.

**ENGRAVED BRICK**

**YOU CAN BUY AN  
ENGRAVED BRICK FOR AS  
LITTLE AS £25 & HAVE YOUR  
NAME, OR THAT OF A LOVED  
ONE, REMEMBERED**

**Just print out the form on  
Page 9 and post it to the  
address detailed.**

## VOLUNTEERING OPPORTUNITIES



**WEEKDAYS AT LOCK 15**  
**or**



**SATURDAYS WITH ONE OF  
OUR WORKPARTIES**

If you can spare some time to  
join one of our teams then  
please email

[volunteer@granthamcanal.org](mailto:volunteer@granthamcanal.org)

**or**

[lan.wakefield@granthamcanal.org](mailto:lan.wakefield@granthamcanal.org)

**Wishing all our members a Merry Christmas  
and a Happy & Healthy New Year!**

**Membership subscriptions support the  
society; they keep us working. Without  
the Grantham Canal Society – the canal  
will not be restored.**

**We, that is you – our members – drive  
the restoration forward.**

**Membership numbers also support us  
in a way which is not immediately  
obvious. Funding organisations like to  
know if there is support in the  
community for the particular project for  
which we are making the application –  
healthy membership numbers go a long  
way in helping us demonstrating this  
support.**

**A huge thank you to all those who have,  
and continue to support the society by  
being a member – there are now over  
400 of you!**

**Our newsletter 'Bridge' is made  
available to members and non-  
members alike. Bridge is sent out to**

**over 800 readers! It's wonderful to  
know that so many of you are taking  
an interest in our work – thank you!  
A project the size of the restoration of  
the Grantham Canal, needs the  
support of the community – this is  
paramount.**

**It would be even more wonderful if our  
readers who aren't already members –  
would think about joining?**

**I look forward to hearing from you  
soon!**

**Join us via our website – together we  
will make it happen!**

**Could I just clear up a misconception  
held by some: whilst we need oodles  
of volunteers – you can be a member  
without volunteering – your  
membership alone is so valuable to  
us!**

**Mary  
Membership Secretary**



Your comments, news items or photos are always very welcome

To contact us please send your email to:

[bridge@granthamcanal.org](mailto:bridge@granthamcanal.org)

The  
**Grantham Canal**  
Society  
CHARITY No: 507337



For a minimum donation of £25 (£75 if a commercial organisation) you can fund bricks for the restoration.

- Donation - £ \_\_\_\_\_
- Make cheques payable to:  
Grantham Canal Society.
- Alternatively, you can use Virgin Money Giving on our website. At [www.granthamcanal.org](http://www.granthamcanal.org) click on the "Help! Click here to Buy a Brick" then click "Make a Donation". Indicate the donation amount then enter your name below in "I'd like my name to be shown with my message". Un-check the box.

Whichever method you use post this tear-off leaf (and cheque if this is your chosen payment method) to the address detailed

Your Name: \_\_\_\_\_

Address: \_\_\_\_\_

\_\_\_\_\_

\_\_\_\_\_

\_\_\_\_\_

\_\_\_\_\_ Postcode: \_\_\_\_\_

Email Address: \_\_\_\_\_

Tel No: \_\_\_\_\_

**Charity Gift Aid Declaration:** I want to Gift Aid my donation of £\_\_\_\_\_ and any donations I make in the future or have made in the past 4 years to the Grantham Canal Society. I am a UK taxpayer and understand that if I pay less Income Tax and/or Capital Gains Tax in the current tax year than the amount of Gift Aid claimed on all my donations it is my responsibility to pay any difference.

Today's Date: \_\_\_\_\_

Signature: \_\_\_\_\_

☐ So we can claim Gift Aid please tick this box

- Please notify The Grantham Canal Society if you
- Want to cancel this declaration
  - Change your name or address
  - No longer pay sufficient tax on your income and/or capital gains



Your comments, news items or photos are always very welcome  
To contact us please send your email to:  
[bridge@granthamcanal.org](mailto:bridge@granthamcanal.org)

**On Your Brick.**

The engraving will be in one or two rows, 13 characters per row (a space = 1 character).

This is an example of the font  
Both upper & lower case can be used

12ABCdef

You can nominate your name, your family's names or, if a business sponsor, your organisation's name. Include the date if you wish.

Double the donation and you can have two bricks. If you wish to donate more than one brick (either as an extension of the first brick or for another individual) please use a second form and secure to the first.

**Please write your inscription in the boxes below:**


Thank you for your donation which will enable the Society to complete the restoration of these locks.

**Please send completed form (and cheque if that is your preferred way of paying) to:**

**Buy-a-Brick**  
**The Grantham Canal Society,**  
**c/o 213 Melton Road,**  
**Edwalton,**  
**Nottingham**  
**NG12 4AF**

**Please write clearly & ensure that you complete both sides of this form**

