

JULY

# BRIDGE

2018



A Convoy near Harlaxton - Photographed by Tony Osbond

The  
**Grantham Canal**  
Society  
CHARITY NO: 507337



Supported by  
**The National Lottery**  
through the Heritage Lottery Fund



## This month's update from Mike Stone (Chairman)

Could the readers who wished for, and received, a hot dry summer please note that the Grantham Canal needs some rain?



Plants are struggling; fish are dying; reservoir levels are falling and The Three Shires has difficulty cruising towards Denton! Might those of you who successfully ordered the sunshine now please consider ordering some of the wet stuff!

Membership numbers have increased over the past year which is appreciated. However, now is not the time to be complaisant as we need to raise our numbers to at least 600. It's not a big ask as another 55 memberships will see us achieve that target so I ask ...can you persuade someone you know to join the society? We need to demonstrate to Local Authorities and other corporate bodies that the society has wide-ranging support for its work. The yardstick such organisations use to value the importance of the GCS is the number of memberships. If you could, dear

reader, persuade just one more person to join you could make a big difference to our success. Please try! A target of 600 is achievable .... with your help!

Work at Lock 15 is almost completed and I am reliably informed that the stop-planks may be removed next week and the lock will become operational – or could be – but work to increase the navigable depth from Lock 16 is required before a narrowboat can reach Lock 15! Then, for the workers it's on to Lock 14 where our priceless volunteers will dismantle and then rebuild it using the experience gained at Lock 15. Their commitment to this work is worthy of recognition by all members of the society and the wider community.

On a slightly serious topic but relevant to this hot spell please be aware that swimming in the canal is potentially hazardous and can be dangerous. Just be sensible and safe and stay on land!

Best wishes

*Mike Stone.*

Many thanks to Rob Cook the photo



**INLAND  
WATERWAYS**  
ASSOCIATION

## NOTES FOR YOUR DIARY

<u>Date &amp; Time</u>	<u>Event &amp; Venue</u>
<b>2018</b>	
<b>Mon 9<sup>th</sup> July 7.30</b>	<b>Rangers Meeting, Depot</b>
<b>Tues 10<sup>th</sup> July 2.00</b>	<b>WRG Family Weekend Planning, Depot</b>
<b>Sat 14<sup>th</sup> July</b>	<b>Radcliffe Carnival</b>
<b>Sat &amp; Sun 14<sup>th</sup> &amp; 15<sup>th</sup> July</b>	<b>Rempstone Steam Fair</b>
<b>Tues 17<sup>th</sup> July 7.00</b>	<b>Events Planning Meeting, Woolsthorpe Depot</b>
<b>Sat &amp; Sun 28<sup>th</sup> &amp; 29<sup>th</sup> July</b>	<b>Belvoir Show &amp; Wheels in the Field, Great Gonerby</b>
<b>Sun 29<sup>th</sup> July 10.00 – 4.00</b>	<b>Summer Sunday Boat Trips</b>
<b>Sun 12<sup>th</sup> Aug</b>	<b>Guided Walk, Woolsthorpe - Muston</b>
<b>Thurs 16<sup>th</sup> Aug 12.45</b>	<b>Talk: Grantham Stroke Club</b>
<b>Fri 17<sup>th</sup> – Sun 19<sup>th</sup> Aug</b>	<b>WRG Family Weekend at Woolsthorpe</b>
<b>Tues 21<sup>st</sup> Aug 2.00</b>	<b>Talk: Colsterworth WI</b>
<b>Thurs 23<sup>rd</sup> Aug</b>	<b>Skylarks Festival, Holme Pierrepont</b>
<b>Sun &amp; Mon 26<sup>th</sup> – 27<sup>th</sup> Aug</b>	<b>Bank Holiday Event – lots of help needed</b>
<b>Sun 2<sup>nd</sup> Sept</b>	<b>Grantham Fire Station Open Day</b>
<b>Wed 5<sup>th</sup> Sept 11.30</b>	<b>Talk: Trent Valley Probus</b>
<b>Thurs 6<sup>th</sup> Sept 6.30 - 8.00</b>	<b>Bingham Brownies</b>
<b>Sat 8<sup>th</sup> Sept 10.00-4.00</b>	<b>Lincolnshire Heritage Open Days 'Picture the Past', Woolsthorpe Depot, short boat trips, etc.</b>
<b>Sat 8<sup>th</sup> Sept</b>	<b>Harlaxton Village Fete changed date</b>
<b>Mon 10<sup>th</sup> Sept 7.30</b>	<b>Talk: East Midland Canoe Group, Boathouse, Barrow on Soar</b>
<b>Thurs 13<sup>th</sup> Sept 2.15</b>	<b>Talk: Nottm National Trust, Mechanics Institute</b>
<b>Sat &amp; Sun 15<sup>th</sup> &amp; 16<sup>th</sup> Sept 11.00 – 4.00</b>	<b>Heritage Open Days in Denton Church</b>
<b>Sun 23<sup>rd</sup> Sept 1.30 – 4.30</b>	<b>Hedgehog Welfare Fundraiser, Foston Village Hall</b>
<b>Tues 25<sup>th</sup> Sept 2.30</b>	<b>Talk by DLB West Bridgford Library</b>
<b>Sun 30<sup>th</sup> Sept 10.00 – 4.00</b>	<b>Summer Sunday Boat Trips</b>
<b>Wed 3<sup>rd</sup> Oct 1.00</b>	<b>Talk: Horsington WI, Horsington Village Hall</b>
<b>Mon 8<sup>th</sup> Oct 7.30</b>	<b>Talk: Gonerby Hill Foot WI</b>
<b>Sun 14<sup>th</sup> Oct 10.00-4.00</b>	<b>Discovery Day 2018</b>
<b>Mon 12<sup>th</sup> Nov 7.30</b>	<b>Rangers Meeting, The Plough, Stathern</b>
<b>Talk bookings are already coming in for 2019!</b>	

If you hear of a local event from a coffee morning to a Steam Fair where we might raise awareness and funds for the society, please let me know [communityandevents@granthamcanal.org](mailto:communityandevents@granthamcanal.org) or 07971173069

*Rosemary Gibson*



# THE GRANTHAM CANAL HERITAGE INITIATIVE

Whilst the lock gates may now be fitted finishing off takes more time - as it has to be done properly



The letterbox during construction & when completed



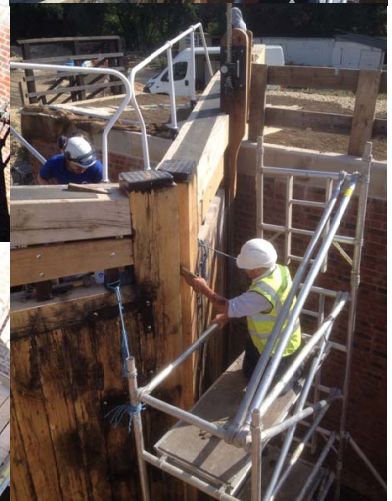
Gate anchor cut and then being sealed



Upper ground paddle being installed & the finished job



The top gate cill timber goes in and mitre floor installed using 5" galvanized nails



Breasting the lower gates using a very long cross-cut saw  
Photos by Bob Taylor & jim Freeman



And not forgetting the step!

Many thanks to John Clark, Bob Taylor & Jim Freeman for these excellent photos & details

## And so to lock 14 “Kingston’s Lock”



**This is the lock in its present state**



**Marking the path for the roadway!**  
Mark Owen & Karen Rice (CRT) talk to John Moulsher &  
Mrs Jean Clarke



**The route - maybe!**



**Like this?**

## Letters to the editor!

Dear Steve

Many thanks for another very newsy and positive 'Bridge' and congratulations to all who've contributed to the progress!

Best wishes

Peter

Dear Steve, Many thanks for latest edition of Bridge and pleased to see Mike's article after his heart attack ... but don't work him too hard "There aren't many of us left!". Especially enjoyed Mike Atherley's article. as ever ... Yours ... Gerry

*Hi Steve. Brilliant edition. Keep up the good work.*

*Met "lofty" Williams for the first time in years today. He was one of my original work party lads doing the original lock 18 / railway embankment removal back in the late 1999 /2000 era t/w Mike Atherley & Ian. All the best Colin.*

## Sunday Work Party Volunteers

Over the last year we have had a number of GCS members and interested individuals from the wider community enquire about volunteering to work on the canal on selected Sundays.

Those out there who are interested please get in touch and let us know

**How many Sundays a month**  
**Which preferred - 1st, 2nd. 3rd or 4th**  
**What hours preferred**  
**e.g. 10;30 to 16:30**

Contact [chiefexecutive@granthamcanal.org](mailto:chiefexecutive@granthamcanal.org) to register your interest, answering the above and giving full contact details



## THE WAY IT WAS

### By Mike Atherley



After the 1972 Stathern Rally things started to change within the committee. First the Chairman Garland Grylls announced his retirement, he had done his job setting up the society, the Secretary Richard Brown disappeared without trace leaving us without any sponsorship contacts for the rally, we were told he had had a nervous breakdown and was not to be contacted. Jim Barker had replaced the Treasurer and Owen Walker who was a business consultant had forewarned us that he was trying to set up a consortium of several large companies in and around Nottingham to contribute an amount that would pay a salary for a person who would then go out in the Vale and promote the canal in the hopes it would raise the necessary monies for restoration. He asked that no one was to approach these companies for donations while his negotiations were in progress but had found that someone had approached them for sponsorship of the Rally. So he resigned also. I with help from two close friends took on the Secretary role, it was a bit different then, you had to be minutes sec, membership sec, editor and printer of Bridge, on a Gestetner rotary duplicator, script writer for the President at the AGM and circulate the committee before the meetings. The AGM's were often grand affairs in a booked hall, normally Toothill School, Bingham. We had a guest speaker, a film show and an update from the President, Sir Denis Le Marchant, Bt. and of course the official meeting.

Things carried on for a while with a deputy chairman until one particular meeting that was quite well attended with members, the normal comment was raised, would anyone take on the job of Chairman. A large man standing at the back of the room stepped forward and with a well projected voice said I'll do it, that was Michael D. Mitchell. He was co-opted onto the committee and from then things started to improve. The first big setback was that Philip Holland MP for the West Bridgford area had noticed a Bill going through Parliament that would allow British Waterway's to dispose of several selected canals, parts of the Grantham being included.

Luckily Mr Hammond was a member and keen supporter of the Grantham and together we agreed with BW that this part be removed allowing the remaining sections of the Bill to proceed through Parliament. You will probably remember that many canals particularly in the Midlands and East Midlands were lost. When BW took over ownership of the Canal and Rivers they were empowered with three types of Navigation, Commercial, like the Aire and Calder, Cruiseways, like the Trent and Mersey and Remainder, like the Grantham. With remainder they were only allowed to maintain them in the most economical way possible but to try to keep a minimum of 2 feet of water in the channel.

We arranged a meeting with BW at their HQ at Marylebone, London, to discuss the future of the Grantham, most of the committee went down, where we met the local Forman and Area Engineer together with senior members of the BW board. We were shown a large scale map of the Grantham Canal with a lot of red sections that they had planned to eliminate. The main part being from Spencers Bridge No.24 to the bottom of Skinners Lock No.4, a total of nearly 6 miles. This included all the dry section and some locks including the subsided section at Cotgrave. They said that the section between the A1 and Spencers was well supplied by water feeders and created a natural watercourse for farmers etc. The section from Skinners to Orston Road, Bridge 1a would be monitored over a longer period of time, this was fed by the Polser Brook. After a long discussion we came away from the meeting with an agreement that if we could restore a one third section of the Grantham to full navigation then over an agreed number of years then they would stop all plans to eliminate the sections we were shown. We also called in on IWA at their London office where we met John Dodwell. This proved to be a good move and a long lasting friendship with IWA. Back at home we eventually agreed that the one third section would be from Redmile Bridge No.54 to the A1 at Grantham. This section appeared to be the easiest and possibly the cheaper options of the lot. As you will all know, we never achieved that target within the time frame but it gave time for BW to consider the future of the canal.

More next time.

## **Community and Events Update July 2018**

Time flies when you're having fun, they say. July already! Thanks to all who've helped with events and educational activities so far. If anyone would like to help at Rempstone Steam Fair July 14<sup>th</sup> & 15<sup>th</sup>, I still have a couple of tickets for helpers. They made a generous donation of £500 from last year's Steam and Country Show.

The sun has brought people to outside events in droves, so we are reaching a lot of people, which we hope results in some new members and boat bookings. An extra event at Kinoulton Open Gardens reached a few more. If there are gaps in the calendar, we try to fill them. Even if there aren't gaps, we try and send a team out if we can. Anyone fancy representing us at Lowdham Show on August 27<sup>th</sup>, bank holiday Monday, when some of us will be busy with our own Bank Holiday Event?

Schools' week, just finished, resulted in a lot of effort and learning from our point of view, but it has built up our skills and resources and we will give it a go again next year. Children and teachers all seemed to enjoy their time with us and when I wound things up by saying that as we get older ... a bright young face looked up at me and finished my sentence saying that they would need to take over looking after the canal. We look forward to hosting Brownies and another educational group soon.

As ever if you hear of local events where we can raise awareness of the society's work, or a school or group which would like to visit us or us to visit them, please get in touch.

[communityandevents@granthamcanal.org](mailto:communityandevents@granthamcanal.org) or 07971 173069

## **Flora & Fauna along the Grantham Canal by James Faulconbridge**



### **July – A different perspective**

We went for a boat trip on 'The Three Shires' a few weeks ago – as I'm sure many of you know, the trips run from Woolsthorpe Wharf and our expedition took us as far as Denton Reservoir. For those more familiar with walking the towpath, this is a great way to see the canal from another perspective – indeed the perspective from which many users of the canal would have historically seen it.

In June and July, you're bound to be accompanied by clouds of damselflies which will often land on the boat as it passes – many of these are the common and azure species but look out for those with red eyes, known originally enough as the red-eyed damselfly!

The low position of the boat in the water also makes it ideal for enjoying the emergent vegetation beside the towpath – in July you can enjoy the arrowhead, flowering rush, water plantain and bur-reed as well as the delicate heads of water crowfoot which push their white buttercup-like flowers above the surface.

Of course you're bound to spot the birds along the canal too – they regularly see kingfishers and we watched buzzards wheeling overhead; as well as water birds such as moorhens and coots.

I think the biggest treat was seeing a grass snake swimming along the surface of the canal as we arrived, earning their common name of 'water snakes'. Easily recognised by their yellow collars, they are non-venomous predators of small fish and amphibians.



**On 13th June**, six members of the **Pocklington Canal Amenity Society (PCAS)** arrived at Duck Hall, Woolsthorpe by Belvoir, to be greeted by Karen and her colleagues from the Canal & River Trust CRT) with morning coffee and biscuits.

A slide show presentation was given detailing the stages of the restoration of Lock 15. There were lots of questions asked regarding the costs and how volunteering was organised on the project. Following this we visited the Lock which, at the time, was awaiting gates to be installed. It certainly showed our visitors the magnitude of the project.

Some people continued down to Lock 14 in order to compare it with the Pocklington Lock which is in need of restoration.

A buffet lunch awaited our return to Duck Hall with more questions and answers before bidding farewell and a safe journey back to Yorkshire.

PCAS have a 9½ mile canal of which 4 miles has been restored and boats are moored on it. They are celebrating their 200th Anniversary with a Boat Rally on the 28th & 29th July at the Melbourne Arms.

If anyone is interested in visiting PCAS at any time, please contact me, Mary Noble 01476 566578.

*'Duck Hall' is Mary's name for Woolsthorpe Depot!*

Ed

## **ARE YOU A MEMBER OF THE GRANTHAM CANAL SOCIETY?**

**THE COST IS MODEST!**

The annual subscription rates are as follows:

Single Adult: .....£20

Family: .....£30

Under 18/Over 60: ..£15

### **The benefits to the Society are enormous.**

**Apart from the obvious increase in regular income, enhanced further by Gift Aid, we are then given a louder voice to "talk" to the local councils. The canal's corridor passes through more County & Borough Councils than you may think!**

**Lincolnshire**  
COUNTY COUNCIL



**Leicestershire**  
County Council



**Nottinghamshire**  
County Council



**Rushcliffe**  
Borough Council

**If you are already a member could you persuade a friend to join?**

**You will also be encouraging those who volunteer and support the Society in various practical ways.**

**A membership form is available to download from our website - just click the 'join now' tab.**



# GUIDED WALK

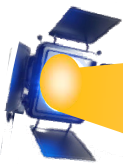
Join the Grantham Canal Rangers on a 6.5 mile walk to visit the nearby village of Muston and the canal towpath.

Meet at the Dirty Duck Public House,  
Woolsthorpe, NG32 1NY



**SUNDAY 19<sup>TH</sup> AUGUST 2018 at 10.30 am**

The walk is free, donations to the GCS welcome.



## Spotlight on Volunteers

**Mark Owen**

*By Tony Jackson*

Those in the know will be quick to point out that Mark isn't a volunteer - although he did volunteer his services!

For three years we've applauded the work of Grantham Canal Society(GCS) volunteers in rebuilding Lock 15. You may also have noticed that this project is a working partnership between ourselves and the Canal and River Trust, with valued support from the guys & gals of the Waterway Recovery Group, also volunteers.

With GCS providing the multiskilled labour force, and the Canal and River Trust providing support in project management; it needed someone to supervise this Heritage Lottery Fund supported project on site.

So Mark, with his team of GCS volunteers, of which I think only one had ever worked on lock restoration before, steered this rebuild to completion.

Joining British Waterways Board in 1979, Mark started his career on the River Trent between Nottingham and Gainsborough – talk about jumping in at the deep end! I didn't ask if he'd ever fallen in!

He worked on bank and lock repairs, crane boats and tugs before becoming a skipper on a bucket dredger.

Along the way, he even found time to train as an electrician, before becoming Team Leader on the Fossdyke, Witham and the Upper Trent. Following this, he became Construction South Supervisor, covering the Erewash Canal, Upper Trent, part of the River Soar and Trent and Mersey Canal.

Work experience has also included Scottish canals, Sheffield & South Yorkshire Navigations, even a sortie down south to the Kennet & Avon.

With this wealth of experience and his eminently approachable nature, there little wonder he is so highly regarded among our volunteers.

Working with volunteers on a project of this magnitude, is a new departure for predominant owners of the canal; the Canal and River Trust, and Mark has been amazed at what we've achieved.

Married to Deborah, with two grown-up children and granddaughter Evie Rose aged 2 ½, Mark has an interest in steam engines, vintage cars, old houses, DIY and enjoys holidays both at home and abroad – any canal boat holidays Mark?

Pictured is Mark at Lock 15, keeping a watchful eye, as one of the huge lower gates is lifted into position.



## WATER SHORTAGE PROBLEMS

The lower sections of our canal and the creatures which live there are suffering severely from lack of water.



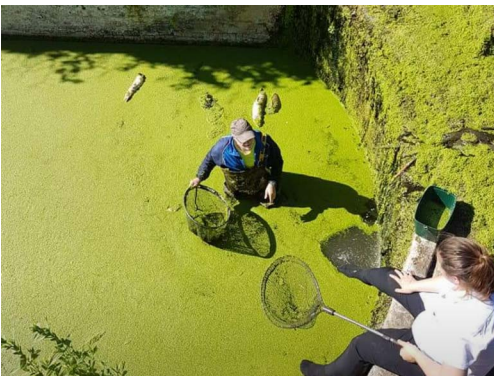
appears that this had been witnessed by a representative of the CRT.

One gentleman, I'll call him James, had rescued several Tench, distressed due to lack of oxygen. He had bought equipment to enable him to transport them by car safely to Hickling.

After chasing several "Agencies" in an endeavour to stir them into action, apart from sending individuals to have a look, nothing appears to have been done by any of them. I was litter picking along Section 1 this afternoon and when I reached Lock 3 (Gamston) several people were gathered around the lock and a young man was in a dinghy in the lock. Collectively they had rescued a cygnet from the lower level to the upper level and reunited it with its parents. They were attempting to do the same with a second cygnet but, so far, without success. During conversations with some of the people I learned that many fish had died in the lock lower level yesterday and today. It



Another local resident, I'll call him Chris, with assistance from James, had formed a boom across the lock weir to hold back the duckweed. This restored a reasonably good flow of water over the weir to the lower level which is in desperate need of water. Yet another resident had purchased a dinghy to enable access onto the canal to rescue the cygnets. Together these people had spent many hours dealing with dead and live fish. A coot had been discovered with its head bitten off suggesting the presence of mink or otters.





Otters had been seen on this stretch and it is thought that they can easily trap fish in the lower lock. This could be why so many had died in that particular location having been herded by the otters and suffered exhaustion in the poor oxygen level.

It would be helpful to cygnets and other chicks which fall into the lower lock level if we were to install a permanent ramp for them to walk up. Of course, this situation arises at many locks along the canal so that is quite a few 8 metre long ladder ramps required.

If it survives the night alone I'm sure that efforts to reunite the remaining cygnet with its parents will continue tomorrow. The restoration of flow to the lower level should be helpful to all of the lower reaches but we need to form a boom at lock 2 also to maximise the benefit. The cascading water should also add some much needed oxygen to the water.

Finally, it would be very nice to see the Environment Agency, the Canal and River Trust and any other relevant "Agency" coming along, not just to look but to take some action. With no rain on the way, things are only going to get much worse over the next few days. The local residents have certainly demonstrated their commitment.

*Rob Cook (Ranger Rob)*

Photographs courtesy Rob Cook & Ms. Taylor

### Editor's Comment.

I have been informed that Canal & River Trust's contractors have removed fish from this section and placed them in a safe area until water levels return to normal.

Apparently cygnets annually take a tumble over the weirs and are invariably 'rescued' later by a parent!



**Between January and June this year the rangers have made 162 visits to the canal totaling 519.5 hours.**

This time is spent litter picking, trimming vegetation that obstructs the towpath, report issues concerning the canal etc, but perhaps our most important function is to communicate with the users of the towpath.

All rangers are reporting water level problems at the moment due to the dry weather.

The canal clearance on the Earlsfield Estate in Grantham continues, with **the next work day arranged for Wednesday 11th July.**

**Meeting at 10.00 am** we start the day with the handover of an inflatable dingy from South Kesteven District Council to the Society.



This work is progressing well and the canal on this section is looking much cleaner.

**Our grateful thanks to the following who has recently made a donation to the Society:**  
P.Skerratt

## Summer Cruise to West Yorkshire Pt 3

By Norman Woolley on his narrowboat "Bruin"



Having to wait for 4 days at Marsden before returning through the Standedge Tunnel, gave me a golden opportunity to explore the local countryside. There is a very interesting visitors centre there but no maps of walking routes to follow, so it was a question of following your nose and using available signage. The scenery was magnificent, especially walking along a well maintained path by the scenic River Colne.



**The River Colne**

The picturesque scenery and fantastic weather enabled me to see Huddersfield in the distance, through which my planned journey should have passed on Bruin, had I not run out of time.

On Friday the 5th June I set off on my return journey back through the  $3\frac{1}{4}$  mile long Standedge tunnel. I found a good overnight mooring at the village of Dobcross before setting off for my

overnight mooring at Stalybridge, down the flight of 10 locks from the summit. It was much easier going down than on the way up in that abysmal wet and windy weather. As I was coming into one of the many locks on the way down, a fellow boater moored in Stalybridge took my windlass and saw me down a further three locks, a most welcome assistance. The next day I said goodbye to the Huddersfield Narrow Canal at Portland Basin, where I turned onto the Lower Peak Forest Canal, which was a more scenic route back to the Trent and Mersey Canal. At the end of that 5 locks day I moored overnight, despite the overhead electricity pylons, at a fine rural mooring near to the bottom of the Marple flight. I left early the following morning to tackle the 16 locks of the Marple flight.

Whilst picturesque, it is very hard work on your own especially that there is nowhere to moor between each lock. It was only around half way up the Marple flight that I started meeting other boats. After five hours spent coming up the flight I decided that was it for the day and moored in a space I found on the Upper Peak Forest Canal. Two nights later I moored about a quarter of a mile above the 12 lock flight at Bosley on the Macclesfield Canal. The following morning with an early start it took me three hours spent descending the flight, I then continued to an overnight mooring beyond Congleton at Astbury, around 4 miles before the Harecastle

Tunnel, through which I passed the following day to moor overnight at Barlaston on the Trent and Mersey Canal. My next destination was Stone, where I moored overnight followed by a stop at Great Heywood. On Thursday the 18th June, 3 days after leaving Stone, I moored Bruin at Kings Bromley Marina in order to return home for several days. Monday 13th July saw me back on board to set off for the Russell Newbery Rally at Titford Pools and the BCN Cruise thereafter. On Friday 24th July, my destination was Braunston via the North Stratford Canal and GU Main line. I arriving there on Saturday 1st August leaving Bruin for some work to be done.



**A strange mooring on the Oxford Canal!**

Two weeks later I headed back down the Oxford Canal to join the River Thames returning to base on the River Wey Navigation & thence to Pyrford Marina on Monday 31st August.



**Aye Up Me Duck**

## **COULD YOU OR YOUR BUSINESS SPONSOR A PRIZE?**

Please support us by sponsoring a prize in this year's Duck Race, 'dubbed the silliest duck race ever' and always a popular part of our annual **Discovery Day** Sunday October 14th this year.

Please contact:

[anthonykjackson@btoopenworld.com](mailto:anthonykjackson@btoopenworld.com)



**Discovery Day 2014**



## **Lady Bay Canal Side Flats Not so Eco**

*The application to develop of a block of 10 Eco Flats alongside the Grantham Canal towpath at Lady Bay has been refused by Rushcliffe B C (RBC).*

On the site of 21 Kendal Court, the Stagfield Development Group proposed to build a two storey block of flats made up of eco apartments designed to “sympathetically integrate and front onto the canal towpath”.

Many local residents expressed their concern and opposition to which RBC have listened.

RBC in their refusal; listed excessive height, scale and massing, allied to overbearing visual pressure on adjacent properties. In fact the block would cause an adverse impact to outlook and light to habitable room windows.

The decision has been welcomed by worried residents whom enjoy the quiet and relaxing stretch of canal countryside on their doorstep. Unfortunately the developers have completely demolished the towpath hedge, containing mature trees, and a variety bushes for about 74 mts. only 0.8mt from the edge of the towpath.

There are Government Laws and Regulations protecting hedges and their habitats, Canal & River Trust are assessing the legal implications concerning whom must make good the destroyed hedge.

*Tony Pitman*



**Architect impression of Block of Flats**



**Area alongside bungalow where hedge destroyed**



Thank you to Pauline who sent us this picture of a boat trip on the Grantham Canal in either 1975 or 1976. Pauline couldn't tell me much about the occasion, other than her late husband Gerry King is steering. I do understand there was a trip boat prior to Soliloquy and our present "The Three Shires" - perhaps one of our stalwart members will be able to enlighten us?

Apologies for the quality of the image, which was scanned from a 35mm slide.

*Tony Jackson*



on 'The Three Shires' Trip Boat

[www.granthamcanal.org](http://www.granthamcanal.org)

**Next Trip Sunday 29th July**

Half hour boat trips depart from Lock 18

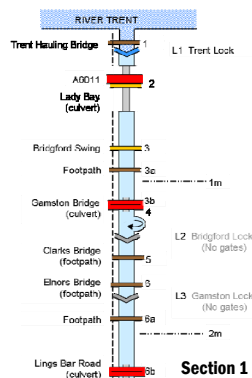
Woolsthorpe by Belvoir, NG32 1NY

£3 Adults

£2 Children

# HELP!

Would you like to get stuck in and improve the appearance of our lovely canal? Well now you have the perfect opportunity. Are you up for the challenge? See what some of the Lady Bay residents got up to with their section pictured below? Can we better their efforts?



All of our work will be supervised by the Canal and River Trust who will give a safety briefing before starting the work and provide all necessary equipment such as inflatables, hand tools, wheelbarrows, etc. They will also dispose of the vegetation and rubbish we remove. All we have to do is provide the MUSCLE.

Whether you can spare 1 hour or several hours, you are welcome to the ... OUTDOOR GYM - WHEN?

**Sun 16th SEPTEMBER 2018 (tbc)**

Please register your interest before Friday 20th July to: Ranger Rob 0798 670 1348 or email [rob.cook47@virginmedia.com](mailto:rob.cook47@virginmedia.com)

## New Faces in New Roles - but More Needed..

The GCS executive group welcome two new faces to the team in important roles that have been vacant for some time.

**Kevan Bailey** has joined us in the Public Relations role and will work in unison with Steve Swann (editor of Bridge) and Tony Jackson (Social Media) to project GCS aims, objectives and achievements to our members, the wider community and our current and potential sponsors.

Kevan is joined on the exec by **Neil White** in the role of GCS Fundraiser, a vital role as we look beyond the current Lock 14 and 15 project at Stenwith to funding future projects.

So, welcome to Neil and Kevan, but there is more to do.

Our Treasurer, Stan Harbidge, sought to resign his position over a year ago and so far no-one has stepped forward. Stan has done a magnificent job over the last six years; he has organised the GCS accounts in a highly professional manner and deserves our thanks and his retirement. So please, any member with accounting experience and a wish to help us, please contact the chief executive.

We are also in need of a new Health and Safety Officer, a vital role given the nature of the work we do. And finally, our Company Secretary Gordon Wallis is looking to lighten his load. Like Stan, Gordon has been instrumental in the progress of the society in the last few years and any member with relevant experience would be very welcome to join us.

**David Lyneham-Brown**  
Chief Executive

## HELP OUR FUNDRAISING BY DONATING...THINGS!

**We have the contacts to raise money for the society from certain donated items.**

**Do you have any of the following which you would like to donate?**

- Stamp collection
- Cigarette Cards
- Model railways - 00 and N gauge
- Beer mats
- Beer pump clips
- Good quality pottery and porcelain
- 12" vinyl LPs, singles and CDs
- DVDs
- Rocks & Minerals

**If so email David on**

**david.lyneham-brown@granthamcanal.org**

**or ring on 07970 858458**

**WE WILL DISCUSS WHAT WE  
CAN TAKE AND SELL FOR  
ADDITIONAL FUNDS  
EVERY LITTLE HELPS!**



**Follow us on  
Facebook**







**Canal &  
River Trust**

Making life better by water

### Discover Woolsthorpe Locks

Woolsthorpe Locks at Woolsthorpe by Belvoir were designed by William Jessop, one of the finest early canal engineers. After falling into disrepair, these magnificent locks have now been restored. Take a great country walk and check them out!



Map not to scale: covers approx 14 miles/24km

## NEW LEAFLET WOOLSTHORPE LOCK FLIGHT

The Canal & Rivers Trust have recently produced an excellent two page leaflet "Discover Woolsthorpe Locks" including their new logo. A colourful well produced cartoon style presentation with loads of information . One historical error visit Belvoir Castle; date of building coal tramway was 1815 not 1793. Can be obtained from their offices The Kiln Mather Rd Newark NG24 1FB opp Waitrose T01636 704 481 Tony Pitman

**Local charities and good causes invited to find out about new local lottery from**



**SOUTH KESTEVEN DISTRICT COUNCIL**

'LotterySK' aims to help raise thousands of pounds for the hundreds of local good causes and charities that work across the South Kesteven district.

LotterySK tickets will cost £1, with 60p from every ticket going directly to charities, voluntary organisations and other good causes - more than twice the proportion of the National Lottery. The lottery will have a top weekly prize of £25,000 per week, with many smaller prizes also on offer.

The Deputy Leader of South Kesteven District Council, Councillor Kelham Cooke said: "We recognise the significant contribution good causes, charities and community groups make across South Kesteven and how they improve the lives of so many people in our district.

"We also know that in recent times of austerity and cuts in funding by central government, the local voluntary and community sector are often the hardest hit. Our new local lottery, LotterySK, aims to give these organisations and groups another way of raising much-needed funds.

"People who buy a ticket can do so knowing that the money goes directly to charities and good causes in our area. They can even decide exactly where their money goes. And, of course, they stand a chance of winning up to £25,000."

**Good causes that sign up to be beneficiaries of LotterySK and whose supporters purchase tickets through that charity's dedicated webpage will receive 50p from every one of those £1 tickets sold, with the remaining 10 pence going towards a Community Fund.**

## **Green Work Wear**

**T-Shirts, Polo Shirts, Sweat Shirts, Fleece, Caps and Woolly hats with the Grantham Canal Society logo.**

**Contact Mary on 01476 566578**

**Available at Depot only.**

## **HEDGEHOG WELFARE**

With the current spell of hot & dry weather hedgehogs will become very ill (dehydrated) just for the lack of water. So can you all **PLEASE** ensure that you have at least one large plant pot saucer of water out, more than one if possible! Please also check before you go to bed that they have not dried up and is nice and full.

For those of us who still have ponds, they may be low at the present time and this can be dangerous for the hedgehogs if they lean over to drink and fall in. A Hedgehog can swim, but it becomes a problem if they can't get out. So if your pond is low, or you are going away, can you put a plank of wood in it leaning at a gentle angle so they can use it as a ramp to get out. Thank you.



Hedgehog drawing  
by Sally Smith

## Data Protection Statement

The Grantham Canal Society may ask for some personal details from its members and volunteers. This ensures that we can contact you and take account of your Health & Safety.

The Grantham Canal Society takes our responsibility for looking after information seriously. We follow the data Protection Act at all times when asking for or handling your information including:

- Personal data shall be processed fairly and lawfully
- Data is processed only for the purpose(s) for which it was collected
- Data is adequate, relevant and not excessive
- Data is accurate and kept up to date
- Data is not kept longer than necessary
- Data is kept secure against unauthorised access and loss or damage

Sometimes sensitive information may also be asked for e.g. health information. We will always ask for explicit consent before collecting or using this information.

A copy of this statement will be brought to the attention of all members and volunteers.

GDPR1805/R0

To UNSUBSCRIBE from receiving further copies of Bridge: email [bridge@granthamcanal.org](mailto:bridge@granthamcanal.org) putting UNSUBSCRIBE as the subject

# VOLUNTEERING OPPORTUNITIES



## WEEKDAYS AT LOCK 15 or



## FRIDAYS & SATURDAYS WITH ONE OF OUR WORKPARTIES

If you can spare some time to join one of our teams then please email [volunteer@granthamcanal.org](mailto:volunteer@granthamcanal.org) or [ian.wakefield@granthamcanal.org](mailto:ian.wakefield@granthamcanal.org)