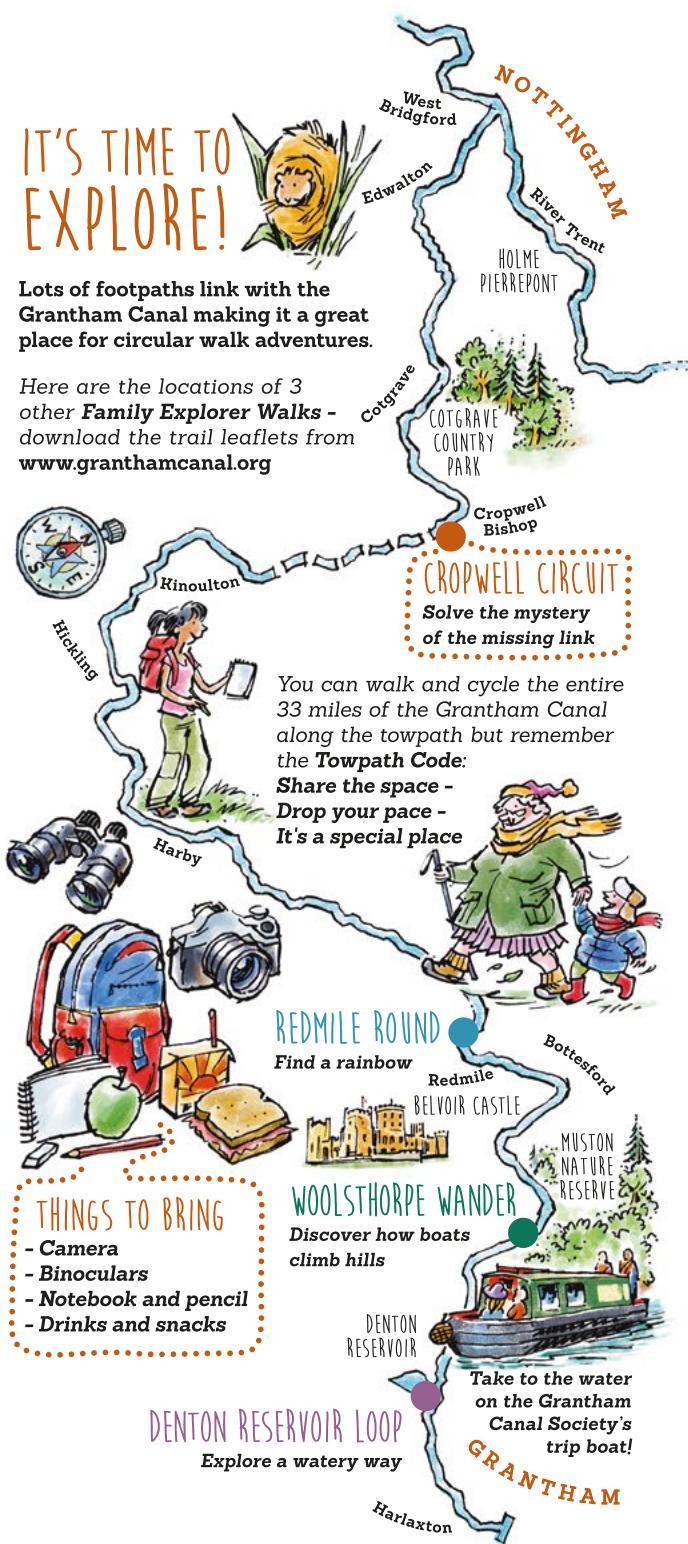


IT'S TIME TO EXPLORE!

Lots of footpaths link with the Grantham Canal making it a great place for circular walk adventures.

Here are the locations of 3 other **Family Explorer Walks** - download the trail leaflets from www.granthamcanal.org



CROPWELL CIRCUIT
Solve the mystery of the missing link

You can walk and cycle the entire 33 miles of the Grantham Canal along the towpath but remember the **Towpath Code**:
Share the space -
Drop your pace -
It's a special place

THINGS TO BRING

- Camera
- Binoculars
- Notebook and pencil
- Drinks and snacks

GETTING TO THE START OF THE WALK

Start / Finish:

Free car park near Memorial Hall, Nottingham Road, Cropwell Bishop (bus stop nearby). Look for black and white railings near car park entrance. For Satnav use NG12 3BA.

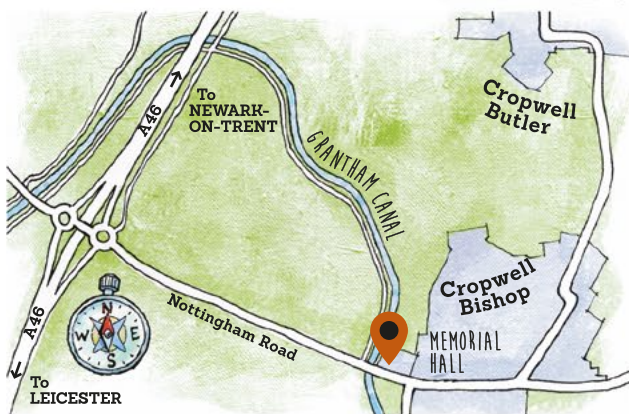
For public transport timetables contact Traveline:

Tel 0871 200 22 33

www.travelineeastmidlands.co.uk

Facilities nearby:

Food shops and pubs in Cropwell Bishop.
Children's play area adjacent to car park.



FOR FURTHER INFORMATION

The Grantham Canal is owned and managed by Canal & River Trust with support and assistance from the Grantham Canal Society.

Find out about visiting, volunteering and events:

Canal & River Trust:

canalrivertrust.org.uk

[@CanalRiverTrust](https://twitter.com/CanalRiverTrust)

[/canalrivertrust](https://www.facebook.com/canalrivertrust)

Grantham Canal Society:

granthamcanal.org

[@GranthamCanal](https://twitter.com/GranthamCanal)

[/granthamcanalsociety](https://www.facebook.com/granthamcanalsociety)

The **Grantham Canal Society**
CHARITY NO: 507337

Canal & River Trust

HERITAGE FUND

ADVENTURE AWAITS! FAMILY EXPLORER DAYS along the Grantham Canal

1 CROPWELL CIRCUIT

Solve the mystery of the missing link

WALK DISTANCE
2 1/2 miles.



Benchmark WALKS

All details correct at time of print in 2021.

What did boats carry between Nottingham and Grantham?

CLUE - Look for the special Grantham Canal bench to find the answer.



ABOUT TURN

When you reach the road turn left and look for the path through the hedge.



Boats no longer travel along this part of the Grantham Canal because two important things are missing?

CROPWELL CIRCUIT WHAT'S MISSING?

Can you work out what they are?

1 MISSING THING!

What keeps ducks and boats afloat?

2 MISSING THING!

How did boats get under the roads?

DID YOU KNOW?

This part of the canal was built on top of a rock called gypsum, which is porous and lets water pass through it. The bottom of the canal had to be lined with waterproof clay to stop the water from leaking away.

There are plans to restore this stretch of canal in the future by rebuilding the bridges and making it waterproof again.

Can you spot this old building beside the canal?



It's the Old Cropwell Mill, warehouse and canal wharf. This is where gypsum stone was crushed into powder to make cement for buildings.

Look carefully:

You can find fragments of pottery around here. How do you think it got there?

CROPWELL BISHOP

Pubs & food shops in Cropwell Bishop.



NOTTINGHAM RD.

FREE P

Cropwell Town Bridge 21

Site of Bridge 22:
Can you see what this bridge was called?



START

Follow the towpath opposite the car park.

When boats reached this stretch of canal, how far had they travelled from the River Trent at Nottingham?
The canal is 33 miles long. How many miles to the other end at Grantham?



HERE'S A CLUE...
FIND A MILE MARKER IN THE HEDGE FROW.



STAY SAFE
Stay **Away From** the **Edge**

Canal & River Trust is the waterways and wellbeing charity looking after 2,000 miles of canals and rivers in England and Wales because we believe life's better by water. T: 0303 0404040
The Grantham Canal Society is a group of experienced volunteers aiming to restore the canal from Grantham to the River Trent in Nottingham.